

3 Series

Compact Utility Tractor



JOHN DEERE



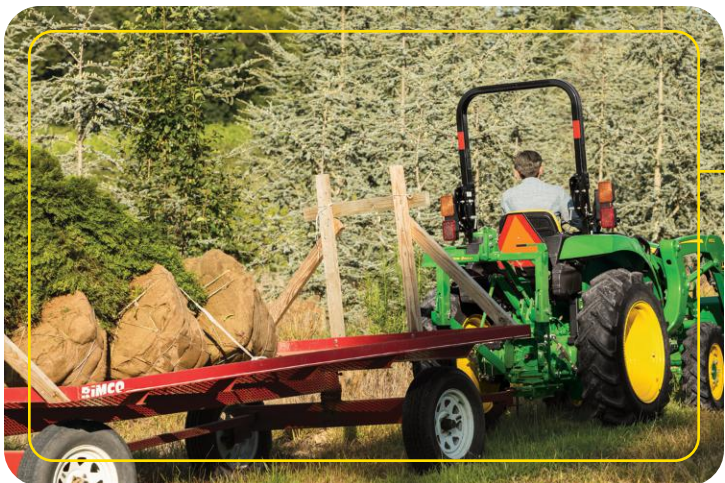
THE MIGHTY 3 REACHES A NEW LEVEL

The 300E Mechanical Self-Leveling option starts level and stays level the easy way. See inside.

Meet The Mighty 3.

Get to know John Deere 3 Series Compact Tractors. This lineup features the 3D, 3E, and 3R. Page after page, you'll find innovative design and engineering, as well as attachments and implements that help you get the job done. Check out the 3s.





The 3D

The 3D Series comes in strong with a **gear drive transmission** and a **standard 4409 lb (2000 kg) hauling capacity**. That's something simple and powerful to hitch your wagon to. Check out the 3D on page 3.



The 3E

This 3 is **economical** and **capable**. The operator station is wide and comfortable. The turning radius, tight at 44 in. (111.76 cm). Get all the details on page 5.



The 3R

Premium, top-of-the-line, and powerfully versatile. That's the 3R. With standard LED headlights and work lights, you can start earlier and end later. The **optional cab has heat and AC**. The eHydro™ transmission increases tractor performance. Or choose the PowrReverser™ option (3033R only) for easy loader work. The optional **AutoConnect™ mid-mount mower deck** is simplicity itself. Learn all about our most powerful mid-PTO (Power Take Off) tractor on page 7.

6-YEAR LIMITED POWERTRAIN WARRANTY¹

¹ All Compact Utility Tractors purchased new from an authorized John Deere dealer come standard with a 6 year/2000 hour (whichever comes first) Powertrain Warranty. See the Limited Warranty for New John Deere Turf & Utility Equipment at dealer for details.

A trifecta of resources to
discover which Mighty 3 model
is right for you:

[JohnDeere.com/3Series](https://www.johndeere.com/3Series)

[JohnDeere.ca/3Series](https://www.johndeere.ca/3Series)

Or visit your John Deere
dealer today.

THE 3D

3025D, 3035D, 3043D

62 IN. (157.4 CM) WHEELBASE

The 49.3 in. (125.4 cm) track width and up to 2800 lb (1271 kg) weight helps with tractor stability on uneven terrain and hillsides. Particularly when towing a wagon.

SIMPLICITY AND POWER. ALL IN A COMPACT SIZE.

That's the mighty 3D. The simplicity starts with a heavy-duty drivetrain, 8F/8R, gear drive transmission. Very easy to learn and use with column and fender mounted shifters. Then there's the muscle with 24.72 HP² (18.2 kW²), 34.7 HP² (25.5 kW²) or 42.2 HP² (31 kW²) options and a powerful, standard 4409 lb (2000 kg) hauling capacity. That doubles what other comparable small tractors can do.

All this in a compact tractor designed for narrow tracts and smaller spaces. It's ideal for large properties, tree nurseries, vineyards, orchards, almond farms, spinach farms, or any other property that needs to move heavy crop or materials from here to there.



**6-YEAR
2,000 HOUR
LIMITED
POWERTRAIN
WARRANTY¹**

¹ All Compact Utility Tractors purchased new from an authorized John Deere Dealer come standard with a 6 year/2000 hour (whichever comes first) Powertrain Warranty. See the Limited Warranty for New John Deere Turf & Utility Equipment at dealer for details.

² The engine horsepower and torque information for non-Deere engines are provided by the engine manufacturer to be used for comparison purposes only. Actual operating horsepower and torque will be less. Refer to the engine manufacturer's web site for additional information. Rated engine horsepower (ISO) per SAE J1995.



3025D

**300E LOADER AND DRAWBAR FOR
LOADER WORK AND HAULING WAGONS.**



3043D

**OPTIONAL FRONT WEIGHTS
FOR BALLASTING.**



3025D

63.6 IN (161.5 CM) TURNING RADIUS.
As measured from the inner rear tire
with a 300E loader. To maneuver
around tight spaces. Add optional pallet
forks for even more versatility.

HELP YOURSELF

Our full list of implements
and attachments would
rival the longest to-do list.
Let [TipsNotebook.com](https://www.tipsnotebook.com)
show you how to use them.



LET THE MIGHTY 3 PULL THROUGH

300E LOADER

The Mechanical Self Leveling Loader (MSL) option has a lift height of 84 in. (214 cm) and a lift capacity of 1283 lb (539 kg) measure at 19.7 in (500 mm) ahead of the pivot, so you can shoulder just about anything. Non Self-Leveling option available.

Pull a wagonload of material across narrow, tight tracts. The heavy duty components are the key to the 4409 lb (2000 kg) hauling capacity.

14 in. (35 cm) Ground Clearance. Get a smoother ride and avoid getting stuck going over uneven terrain.

1670 lb (757.4 kg) Hitch Capacity. That's some serious muscle.

Fender Mounted Gear Shift Lever. Right at hand, instead of awkwardly placed between your legs.

Forward Reverse (F/R) Lever. Column mounted next to the steering wheel, so changing directions is easy and at your fingertips.

The 9.7 U.S. gal. (36.7 L) Fuel Tank. At the back of the tractor for easy access. It holds enough diesel fuel for a full, 8-hour day's work.³

1200-Hour Transmission Fluid Service Interval. That's more time in the field and less time in the shop performing maintenance.

Service Advisor. Onboard diagnostics identify issues and help direct repairs.

Telescoping Draft Links Option. Connect attachments and implements to the back of your tractor without constantly readjusting.

John Deere Quik-Knect™ Option. The easy way to connect most PTO powered implements and attachments to the back of your tractor without scraping your knuckles.

A Bright Option. Add optional LED work lights and turn night into day.

THE ULTIMATE WAGON HAULER. Plenty of low-end grunt thanks to the heavy-duty drivetrain and the large spiral bevel gear.

³ Performance varies based on engine load requirement. Fuel consumption varies based on engine load.

THE 3E

3025E, 3032E, 3038E

THE OPEN OPERATOR STATION IS WIDE AND COMFORTABLE and the seat is a command chair. The controls are intuitive and clearly labeled.

These 24.72 HP² (18.2 kW²), 31.1 HP² (22.9 kW²), or 37.2 HP² (27.4 kW²) small farm and landscape tractors are economical and versatile. Perfect to dig into to-do lists.

Economy and quality are strengths here. The operator station is wide and comfortable. Other popular features include power steering for maneuverability and a tight turn radius. You'll also get terrain-hugging four-wheel drive and the forward/reverse Twin Touch™ pedal system. Because changing directions is easy with separate pedals. One for forward. The other for reverse.

PERFECT TO DIG INTO TO-DO LISTS.

**6-YEAR
2,000 HOUR
LIMITED
POWERTRAIN
WARRANTY¹**

¹ All Compact Utility Tractors purchased new from an authorized John Deere Dealer come standard with a 6 year/2000 hour (whichever comes first) Powertrain Warranty. See the Limited Warranty for New John Deere Turf & Utility Equipment at dealer for details.

² The engine horsepower and torque information for non-Deere engines are provided by the engine manufacturer to be used for comparison purposes only. Actual operating horsepower and torque will be less. Refer to the engine manufacturer's web site for additional information. Rated engine horsepower (ISO) per SAE J1995.





3025E

OPTIONAL CANOPY to provide cover from the sun or rain.



370B BACKHOE (available on 3E models only). These backhoes have a reach of nearly 10 ft. (304.8 cm) and can dig down 6 ft. 10 in. (208.3 cm).



OPTIONAL 300E LOADER with a Mechanical Self-Leveling Loader (MSL) option has a lift height of 84 in. (214 cm) and a lift capacity of 1283 lb (539 kg) measure at 19.7 in (500 mm) ahead of the pivot, so you can shoulder just about anything. Non Self-Leveling option available.



3038E

LET THE MIGHTY 3 MAKE SHORT WORK OF YOUR TO-DO LIST

The Power Steering. Fueled by a dedicated hydraulic pump. Something you'll appreciate when you've got some serious loader work to do.

The Generous Ground Clearance. Helps you avoid getting stuck and gives you a smoother ride on uneven terrain.

Liquid-Cooled Diesel Engines. These efficient diesel engines offer deep reserves of torque for handling tough loads.

The Fuel Tank. At the back of the tractor for easy access. Also, having the fuel tank away from the hood isolates the fuel and allows for top engine performance.

12-Volt Outlet. Mounted on the right fender to provide power at need.

Service Advisor. Onboard diagnostics identify mechanical problems and help direct repairs.

Engine Access. As easy as 1-2-3-4 with four quarter fasteners on the engine panel. Plus, side panels may be removed without tools in under a minute.

1200-Hour Transmission Fluid Service Interval. That's more time in the field and less time performing maintenance in the shop.



THE STANDARD FOUR-WHEEL-DRIVE and differential lock add traction to help negotiate sandy soil, mud, snow, and tough chores.

HELP YOURSELF

Our full list of implements and attachments would rival the longest to-do list. Let TipsNotebook.com show you how to use them.

THE 3R

3033R, 3039R, 3046R

POWR REVERSER™ TECHNOLOGY.

Features no-stop forward-to-reverse shifting with the flip of a lever. Designed to simplify tasks requiring frequent directional changes, such as loader work.

The 3R IS STRONG WITH 32.2 HP² (23.7 KW²), 38.7 HP² (28.5 KW²), AND 45.3 HP² (33.3 KW²) OPTIONS.

Choose between a hydrostatic transmission or a PowrReverser™ option. With the PowrReverser™, you'll get precise hydraulic control, the foundation of loader work efficiency, and smoothness. Comfort features include a suspension seat, adjustable steering wheel, and intuitive, color-coded tractor controls.

The durable, heavy-duty frame and solid weight provide exceptional power to the ground. The standard four-wheel drive and power steering offer ground-gripping maneuverability and traction in dirt, mud, snow, or sand.

Powerful LED headlights and work lights so you see better earlier, later, and in challenging weather conditions.

The options are even stronger, including, a climate controlled cab for all-weather work and an optional drive-over AutoConnect™ mid-mount mower deck. Because the tractor is a John Deere, mowing is always a strength.

**6-YEAR
2,000 HOUR
LIMITED
POWERTRAIN
WARRANTY**

¹ All Compact Utility Tractors purchased new from an authorized John Deere dealer come standard with a 6 year/2000 hour (whichever comes first) Powertrain Warranty. See the Limited Warranty for New John Deere Turf & Utility Equipment at dealer for details.

² The engine horsepower and torque information for non-John Deere engines are provided by the engine manufacturer to be used for comparison purposes only. Actual operating horsepower and torque will be less. Refer to the engine manufacturer's web site for additional information. Rated engine horsepower (ISO) per SAE J1995.

THE OPTIONAL CAB WITH HEAT AND AC.

All weather. Any season.

The 3R cabs now have optional Bluetooth® radio to keep you company.

Add a backup alarm, horn kit, rear wiper kit, and more options for your 3R tractor cab.



LET THE MIGHTY 3 COME THROUGH WITH THE BEST OF EVERYTHING

THE FINAL TIER 4 EMISSIONS COMPLIANT, LIQUID-COOLED DIESEL ENGINE
Tested over thousands of hours, under heavy loads, with temperatures as low as -28 °F (-33 °C).
It's ready for your job.

Standard Automotive-Style Cruise Control. Keeps a constant speed.

Forward/Reverse Twin Touch™ Pedals. One pedal to go forward. Another to go backward.

LoadMatch™ Technology. Prevents engine stall during heavy load applications.

MotionMatch™ Technology. Fine tunes transmission responsiveness with the turn of a dial.

SpeedMatch™ Technology. Pre-sets a maximum speed. Perfect for low-speed applications.

eThrottle™ Technology. Increases engine RPM and tractor speed simultaneously, for maximum performance while preserving fuel.

The 60D or 72D Drive-Over AutoConnect™ Mid-Mount Mower Deck. Simply drive over this large mower deck—then drive off with it—and get mowing.

Quick-Attach Backhoes. Install this backhoe within minutes while not removing 3-pt hitch components.

Quik-Park™ 300R and 320R Loaders. Can be attached and detached (with an integrated parking stand) in less than three minutes with no tools.



OPTIONAL INVERTED REAR SNOW BLOWER, great for clearing parking lots or driveways.



Forward/
Reverse
Twin Touch™
Pedals.

Intuitive
controls.



Easy to
maintain
and service.

HELP YOURSELF

Our full list of implements and attachments would rival the longest to-do list. Let TipsNotebook.com show you how to use them.



OPTIONAL FRONT-HITCH AND FRONT PTO give you more flexibility to accomplish your tasks. Perfect for snow blowing.

² The engine horsepower and torque information for non-John Deere engines are provided by the engine manufacturer to be used for comparison purposes only. Actual operating horsepower and torque will be less. Refer to the engine manufacturer's website for additional information. Rated engine horsepower (ISO) per SAE J1995.



iMatch™ Quick-Hitch
Connect attachments and implements
the easy way.



John Deere Quik-Knect™
The easy way to connect rotary cutters,
tillers, and other PTO-driven implements.



Equipment Mobile App

Allows you to manage, maintain, and keep your equipment running. Prepare your equipment for work, access key information from the Operator's Manual, and find the parts you need. Use the app to gain insights that help you proactively manage day-to-day activities.

Download at the App Store or at Google Play.

The Smart Connector option enhances the user experience of the Equipment Mobile App by adding several features that help operators use and maintain equipment more efficiently.



Third Function Loader Hydraulics. Add functionality and control for greater bucket and blade manipulations.

Additional Selective Control Valves provide additional hydraulic outlets to allow for multiple functions on various implements.

Power Beyond Kits⁴

The hydraulic connections you need to hook up your backhoe and wood chipper.

⁴For backhoes and wood chippers.

Implements

LET THE MIGHTY 3 GET IT DONE.

From backhoes to wheel rakes to snowblowers and mower decks, John Deere and Frontier commercial-grade implements do it all, with precision, fast. Thanks to John Deere iMatch™, Quik-Park™ loaders and drive-over mower decks. Many, many, many implements are ready and waiting. Visit JohnDeere.com, JohnDeere.ca, or talk to your John Deere dealer today. Here's a short list to get you started:



Loaders

Everything from buckets to pallet fork attachments. Loader work is 3 Series territory. The 300E Loader features Mechanical Self-Leveling and non-Self-Leveling options. The 300R and 320R feature an integrated parking stand to simplify attachment and detachment.



Rotary Cutter

Because cutting grass and brush is just one of many tasks. Grooming mowers also available.



Rotary Tiller

Commercial-grade with heavy-duty tine shafts to loosen even the most packed-down soil.



Post Hole Digger & Augers

Installing a new fence? Dig deep and wide, tree roots and all, for your posts.



Backhoe

Provides precise control and extra torque when back-filling, superior visibility to the trench, and powerful digging force.



Drive-Over AutoConnect™ Mid-Mount Mower Deck or OnRamp™ Mower Deck

Cuts grass down to size and is easy to attach. 3R only.



Core Aerator

Keep grass roots healthy. Allows oxygen in the ground and opens the soil to accept fertilizer.



Front Blade

Moves dirt or gravel and clears snow. Angle right or left to make the job easier. Box blades, rear blades, landscape rakes, and land planes also available.



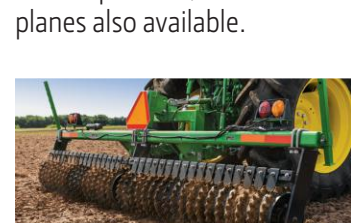
Disk (3 Point)

To control weeds in low-lying areas that can't be sprayed or seeded.



Overseeder

Aerate soil and plant seed. Smoothly. Efficiently.



Cultipacker

To firm and smooth seedbeds after disking.

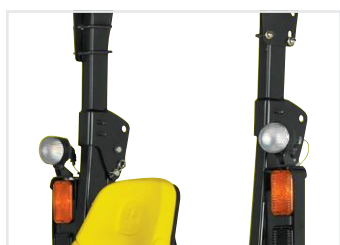
Optional Attachments:
Mechanical thumb, ripper point and 8 in. trenching bucket.

Attachments



LET THE MIGHTY 3 DO MORE.

Whether it's enhanced productivity, stability, visibility, or hours in the field, these attachments will help you get the most out of your 3 Series Tractor.



Forward Lighting Kit, Rear Work Light and 360° LED Lighting

Enjoy increased visibility when working in low-light conditions. Lights mount to brush guards located on the ROPS.



Lighting Brush Guard Kits (Two Guards)

Available for both the warning lights and LED lighting options.



Engine Coolant and Transmission Oil Heaters

For cold weather operation, be ready with these kits to warm your machine.



Canopies

ShadePro™ Canopy Sun protection with an adjustable fan. Keep cool while keeping debris off you. Installed to the ROPS.



Mirror Kits

For greater visibility of what's behind you while focusing on what's ahead.



Ballast Box

Easily add or reduce ballast with this heavy-duty box.

Optional ballast box extension available for category 1 boxes.



Quik-Tatch Weights, 42 lb (19.1 kg) and 70 lb (32.7 kg)

Add some extra weight to the front of the machine easily and securely with Quik-Tatch weights.



Rear Wheel Weights

Weight for ballast to help keep all four wheels on the ground.



Telescoping Draft Links

Reduce the amount of effort to attach 3-point implements, making small adjustments without moving the tractor.

Not compatible with iMatch™ Quick Hitch.



Top and Tilt

Allows hydraulic positioning, left/right and forward/backward, from the operator's seat using the loader joystick. Ideal for use in box blade or rear blade applications.

3R only.



Front Fenders and Rear Fender Extensions

Keep it clean by protecting the tractor and the implements from debris flying off the tractor tires.

Rear fender extensions shown. 3R only.



Hood Guard

Protect your hood from limbs and brush. Because your hood stands between the harsh, off-road world and your engine.



Tire Chains

For better traction in snow, ice, and tough conditions.



Drawbar

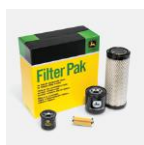
Attaches to the back of your 3 Series Tractor and makes hauling and towing a breeze.

HELP YOURSELF

The full list of our implements and attachments would rival the longest to-do list. Let TipsNotebook.com show you how to use them.

For the full list, visit JohnDeere.com, JohnDeere.ca, or talk to your John Deere dealer today.

Maintenance Parts



Filter Pak

The key to do-it-yourself maintenance when changing your tractor filters.



Plus-50™ II Oil

The only engine oil you really ever need on the farm, in the field, or on the highway.



Battery

John Deere StrongBox™ Batteries and high performance batteries are a versatile, reliable solution. Economy options available.

Cell Phone Mount Kit

Keep your hands free and your phone at hand. 3R Cab only.

Tablet Mount Kit

Keep your hands free and your tablet at hand. 3R Cab only.

Stereo

AM/FM, Weatherband, Satellite, tablet or smart phone-ready. Optional Bluetooth® radio. 3R Cab only.

Cruise Control Kit

For MY18 and newer tractors. Allows you to easily set your ground speed.

3-Point Tractor Receiver Hitch

For height adjustability and towing without the drawbar.

7-Pin Trailer Connector

Turn signal and position indicator all connect through here. 3R only.

Air Seat Suspension Kit

Sit down and make yourself comfortable. Cab and open operator station models available. 3R only.

Large Seat Cover

By protecting your seat, many comfortable years are sure to follow.

The Augusta Georgia Factory

All 3E and 3R Tractors are **designed, assembled, tested, and distributed** out of Augusta, Georgia, using foreign and domestic parts. These tractors are built to last. Learn more about how we run at JohnDeere.com/3Series or JohnDeere.ca/3Series.



6-YEAR / 2,000 HOUR LIMITED POWERTRAIN WARRANTY

We're backing these tractors with a reliable 6-Year Powertrain Warranty¹. It's standard, comes at no cost, and covers both residential AND commercial use. It's just one more reason why—Nothing Runs Like a Deere.[™]

¹ All Compact Utility Tractors purchased new from an authorized John Deere dealer come standard with a 6 year/2000 hour (whichever comes first) Powertrain Warranty. See the Limited Warranty for New John Deere Turf & Utility Equipment at dealer for details.

POWERGARD™ PROTECTION PLANS*

Protect your 3 Series Tractor with a PowerGard™ Protection Plan. It provides parts and labor coverage up to five years beyond your manufacturer's warranty. And if you sell your machine before coverage term ends, the remaining coverage is fully transferable to the next owner—adding value to resale or trade-in.

RESIDENTIAL (U.S.)

Offers same coverage as factory warranty; \$0 deductible and no out of pocket costs on covered repairs; transportation for repairs covered by factory warranty, or extended repair protection.

AGRICULTURE EQUIPMENT (CANADA)

Offers same bumper-to-bumper coverage as factory warranty (excludes some specific items); excludes high-wear/maintenance type of parts/components; subject to a low (or no) deductible.

	3025D	3035D	3043D	3025E
ENGINE				
Type	3TNV88F-EPJPT Yanmar® Diesel Engine	3TNV88F-EPJPT Yanmar® Diesel Engine	3TNV88F-EPJPT Yanmar® Diesel Engine	3TNV88F-EPJTI Yanmar® Diesel Engine
Horsepower	24.72 (18.2 kW) ⁵	34.7 (25.5 kW) ⁵	42.2 (31 kW) ⁵	24.72 (18.2 kW) ⁵
PTO HP Geared Transmission	20.7 (15.4 kW)	30.4 (22.7 kW)	36.3 (27.1 kW)	—
PTO HP	—	—	—	19.4 (14.4 kW)
Rated Speed, rpm	2400	2800	2800	2400
Engine Displacement	100.2 cu. in. (1.64 L)	100.2 cu. in. (1.64 L)	95.8 cu. in. (1.57 L)	100.2 cu. in. (1.64 L)
Battery Power	12V, 600 CCA	12V, 600 CCA	12V, 600 CCA	12V, 500 CCA
Alternator	55 A	55 A	55 A	55 A
HYDRAULICS				
Steering	3.8 gpm (14.4 L/min)	4.4 gpm (16.8 L/min)	4.4 gpm (16.8 L/min)	4 gpm (15 L/min)
Implement	5.1 gpm (19.2 L/min)	5.9 gpm (22.4 L/min)	5.9 gpm (22.4 L/min)	5.3 gpm (20.2 L/min)
Total Capacity	8.9 gpm (33.6 L/min)	10.3 gpm (39.2 L/min)	10.3 gpm (39.2 L/min)	9.3 gpm (35.2 L/min)
Lift capacity (24 in. Behind Center Link)	1670 lb (757.4 kg)	1670 lb (757.4 kg)	1670 lb (757.4 kg)	1356 lb (615 kg)
TRANSMISSION				
Standard	Gear Transmission (8F-8R)	Gear Transmission (8F-8R)	Gear Transmission (8F-8R)	Hydrostatic-2 Range
Optional	NA	NA	NA	NA
Final Drive	Spur Gear	Spur Gear	Spur Gear	Spur Gear
Brakes	Wet Disc	Wet Disc	Wet Disc	Wet Disc
Steering	Power	Power	Power	Power
POWER TAKE-OFF (PTO)				
PTO Type	Transmission Driven With Overrunning Clutch	Transmission Driven With Overrunning Clutch	Transmission Driven With Overrunning Clutch	Independent
PTO	Rear 540	Rear 540	Rear 540	Rear 540
PTO Options	—	—	—	—
REAR HITCH				
Type	Category 1	Category 1	Category 1	Category 1
Control Type	Position	Position	Position	Position
WEIGHT				
Open Station 4WD/MFWD	2778 lb (1260 kg)	2800 lb (1271 kg)	2800 lb (1271 kg)	2222 lb (1008 kg)
Cab MFWD	—	—	—	—
LOADER				
Max Height Lift Capacity at Pivot	1186 lb ⁵ (539 kg) ⁶	1186 lb ⁵ (539 kg) ⁶	1186 lb ⁵ (539 kg) ⁶	1186 lb (539 kg) ⁶

²The engine horsepower and torque information for non-John Deere engines are provided by the engine manufacturer to be used for comparison purposes only. Actual operating horsepower and torque will be less. Refer to the engine manufacturer's website for additional information.

³Rated engine horsepower (ISO) per SAE J1995.

⁴Lift values based on 320R loader. For a complete list of loader specifications see your dealer.

⁶Certain limitations and exclusions may apply. For complete terms and conditions, please refer to JohnDeere.com/pppr or JohnDeere.ca/pppr



JOHN DEERE FINANCING

You can count on John Deere Financial. Just like John Deere Tractors, our roots run deep in some of the healthiest, high producing fields and farms in the world and we're proud of the long-standing relationships we have with small farmers and large farming operations alike.

The lay of the land of commercial landscapers, sports turf complexes, golf courses, municipalities, and federal governments are no strangers to us either. Put the strength and flexibility of John Deere Financing behind your purchase. We know the landscape you work in and we're committed to helping you get what you need. You can bank on it.

	3032E	3038E	3033R	3039R	3046R
ENGINE					
Type	3TNV88C-NJT Yanmar® Diesel Engine	3TNV86T-NJT Yanmar® Diesel Engine	3TNV88C Yanmar® Diesel Engine	3TNV86CT CR Yanmar® Diesel Engine	3TNV86CHT CR Yanmar® Diesel Engine
Horsepower	31.1 (22.9 kW) ⁵	37.2 (27.4 kW) ⁵	32.2 (23.7 kW) ⁵	38.7 (28.5 kW) ⁵	45.3 (33.3 kW) ⁵
PTO HP	25.0 (18.6 kW)	30.0 (22.4 kW)	24.3 (18.1 kW)	31.1 (23.2 kW)	36.6 (27.3 kW)
Rated Speed, rpm	2500	2500	2600	2600	2600
Engine Displacement	100.2 cu. in. (1.64 L)	95.7 cu. in. (1.57 L)	100.2 cu. in. (1.64 L)	95.7 cu. in. (1.57 L)	95.7 cu. in. (1.57 L)
Battery Power	12V, 500 CCA	12V, 500 CCA	12V, 500 CCA	12V, 500 CCA	12V, 500 CCA
Alternator	55 A	55 A	75 A	75 A	75 A
HYDRAULICS					
Steering	4 gpm (15 L/min)	4 gpm (15 L/min)	6.2 gpm (23.5 L/min)	6.2 gpm (23.5 L/min)	6.2 gpm (23.5 L/min)
Implement	5.3 gpm (20.2 L/min)	5.3 gpm (20.2 L/min)	9.1 gpm (34.3 L/min)	9.1 gpm (34.3 L/min)	9.1 gpm (34.3 L/min)
Total Capacity	9.3 gpm (35.2 L/min)	9.3 gpm (35.2 L/min)	15.3 gpm (57.6 L/min)	15.3 gpm (57.6 L/min)	15.3 gpm (57.6 L/min)
Lift capacity (24 in. Behind Center Link)	1356 lb (615 kg)	1356 lb (615 kg)	2200 lb (998 kg)	2200 lb (998 kg)	2200 lb (998 kg)
TRANSMISSION					
Standard	Hydrostatic-2 Range	Hydrostatic-2 Range	PowrReverser 12F/12R	PowrReverser 12F/12R	eHydro
Optional	NA	NA	Hydrostatic-3 Range	Hydrostatic-3 Range	NA
Final Drive	Spur Gear	Spur Gear	Helical Gear	Helical Gear	Helical Gear
Brakes	Wet Disc	Wet Disc	Wet Disc	Wet Disc	Wet Disc
Steering	Power	Power	Power	Power	Power
POWER TAKE-OFF (PTO)					
PTO Type	Independent	Independent	Independent	Independent	Independent
PTO	Rear 540	Rear 540	Rear 540	Rear 540	Rear 540
PTO Options	—	—	Mid	Mid	Mid
REAR HITCH					
Type	Category 1	Category 1	Category 1	Category 1	Category 1
Control Type	Position	Position	Position	Position	Position
WEIGHT					
Open Station 4WD/MFWD	2222 lb (1008 kg)	2222 lb (1008 kg)	2900 lb (1316 kg)	2900 lb (1316 kg)	2900 lb (1316 kg)
Cab MFWD	—	—	3570 lb (1619 kg)	3570 lb (1619 kg)	3570 lb (1619 kg)
LOADER					
Max Height Lift Capacity at Pivot	1186 lb (539 kg) ⁶	1186 lb (539 kg) ⁶	1598 lb (725 kg) ⁶	1598 lb (725 kg) ⁶	1598 lb (725 kg) ⁶



Run With Us | Nothing Runs Like a Deere™

US: [JohnDeere.com/3Series](https://www.JohnDeere.com/3Series)
CA: [JohnDeere.ca/3Series](https://www.JohnDeere.ca/3Series)
Visit your John Deere Dealer

This literature has been compiled for worldwide circulation. While general information, pictures and descriptions are provided, some illustrations and text may include finance, credit, insurance, product options and accessories NOT AVAILABLE in all regions. PLEASE CONTACT YOUR LOCAL DEALER FOR DETAILS. John Deere reserves the right to change specification, design and price of the products described in this literature without notice. John Deere's green and yellow color scheme, the leaping deer symbol, and JOHN DEERE are trademarks of Deere & Company. Copyright 2023, Deere & Company.

